

Instructions on Printer TEST V3.2C Testing tools

I、Introduction of Main Interface:

POS Printer test V3.2

Port Select: ☐ LPT ☐ COM ☒ USB ☐ NET

Printer Type: ☐ POS-58 ☐ POS-76 ☒ POS-80

LPT Settings: LPT1

COM Settings: COM1 9600 4 RTS

NET Set

Local IP: 192 . 168 . 1 . 159

Printer IP: 192 . 168 . 123 . 100

New IP: 192 . 168 . 1 . 100

New ID: 0 . 0 . 0 . 0

Refresh Auto Set Ip

Connect Ping

Set New IP NetMonitor

New ID (Set last four ID)

Content NO. Rep: 1 6 7 HEX Clear

☐ AutoSend 9 Cyc 500 ms ☐ CutPaper

1 2 3

Welcome to use the impact and thermal printer manufactured by professional POS receipt printer company!

10 Print

11 Cut Paper

12 Open cash drawer

13 Traditional

14 Driver Print

15 Advanced

16 中文简体

POS printer test tool V3.2

2020-06-17 17:17:15

Power by Lee (C) 2020

USB:

1. Communication port selection:

Four options of printer communication interface: parallel port, serial port, USB port and Ethernet port.

2. Printer type selection:

Printer type: default to POS-80

3. Parallel port Settings (LPT Set):

Parallel port Settings---- be consistent with the computer communication parallel port number.

4. Serial port Settings (COM Set):

Serial port Settings----- set the serial port number, baud rate, flow control, etc.

5. Ethernet port Settings (NET Set):

Change the IP address of Ethernet port printer through Ethernet port Settings.

“Local IP”--- computer’s real IP address which can be added manually or by Clicking "refresh" button.

“Printer IP”---printer’s current IP address , its detailed information can be seen on self- test page, only suitable for Ethernet port printers.

“New IP address”--- the new IP address the printer’s IP address is to be changed to (printer’s IP address shall be in the same network segment as the connected computer’s to realize intercommunication).

“New ID address”--- the new ID address the printer’s ID address is to be changed to(Printer’s ID address must be an only address within a network).

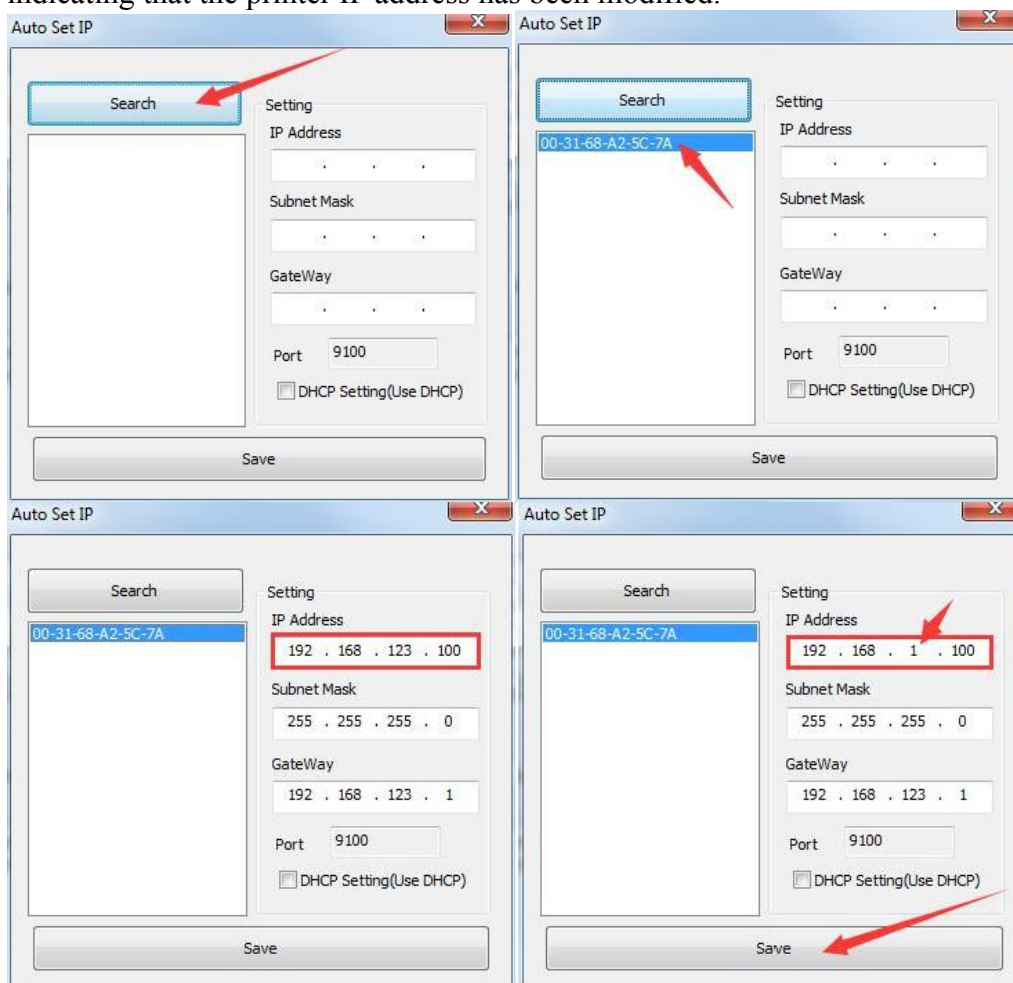
Ethernet port settings are operated by means of HUB and SWITCH, in case that the settings can’t be changed by ROUTER, other means can be used, please refer to the PDF in the folder "IP address changes. and other functional specification" on the CD.

“Auto Set IP”----Used to search printers in the same LAN.

The method of modifying the printer IP address across network segments is as follows:

(1) Click the "Automatically Set IP" button to enter the setting interface.

(2) Click the "Find" function in the setting interface, and the MAC address of the connected printer will be displayed. Double-click the MAC address of the printer to display the current IP address of the printer and other information. After modifying the IP address, click the "Save" button. The printer buzzer will beep, indicating that the printer IP address has been modified.



“Net Monitor”----Monitor printer status through network. (net port available)

6. Number of the copies:

It refers to the printing quantity of the repeat print of the test content.

7. HEX:

Data can only be transmitted by inputting hexadecimal after having selected printing content.
(It's mainly used to send instructions to the printer).

8. Printing content:

Edit the printing content here, and send data by clicking "Print" button.

9. Automatically sending, cycle, paper cutting:

“Automatically sending”----- Click the "Auto Send" button and the software will automatically send the data in the printing content column to the printer.

“Cycle”----- cycle time to send data automatically

“Paper cutting”----- Printer will automatically do paper cutting work according to the cycle time after the “Auto Send ” button and “cyc” button have been set.

10. Print:

Print the information and data in the “content” edit box.

11. Paper cutting:

Test the function of paper cutting action.

12. Open cash drawer:

Test the cashbox function

13. Traditional font test:

Used for testing traditional fonts printing

14. Driver print:

Call the installed Windows driver to test print, printing out the information suggests successful installation

15. Advanced:

Click "advanced" button, and set up more features to have print test, below is the detailed introduction.

16. English:

It's for switching software interfaces between English and Chinese.

II、 Setup instructions for “advanced” button

Click the "advanced" button on the main interface, the following interface will pop up:

The 'Advanced' settings window contains the following numbered items:

- H Parameter Settings: 1 (Print H button)
- Code page Settings: 2 (PrintCodePage button)
- NV Logo Test: 3 (NV Download button)
- Barcode Printing test: 4 (Print BarCode button)
- P76 Buzzer Settings: 5 (Set Buzzer button)
- P76 Density Settings: 6 (Set button)
- P80 Black sens: 7 (Set Sensitivity button)
- baud rate settings: 8 (Set BaudRate button)
- DIP Settings: 9 (Set P58 DIP, Set P80 DIP, Set P76 DIP buttons)
- 2D Barcode test: 10 (Print 2D Barcode button)
- Net Settings: 11 (Set Net, Set Bluetooth buttons)
- USB MODE Settings: 12 (USB Printing, Virtual COM buttons)
- Black Mark Settings: 13 (Set 80 BlackMark, Set 76 BlackMark buttons)
- File data send: 14 (Open File Send button)
- Cut With Beep: 15 (Cut With Beep Set button)
- Input Box Code page: 16 (936 - Chinese Simplified(GB2312) dropdown)

1.Set H parameter:

Its Main function is for definition adjusts of the 76 series needle printer. First click "Print H", and the printer will print 16 groups of H letters from 0 to F, then set "Set delta" button by choosing the clearest group.

2.Set Code page:

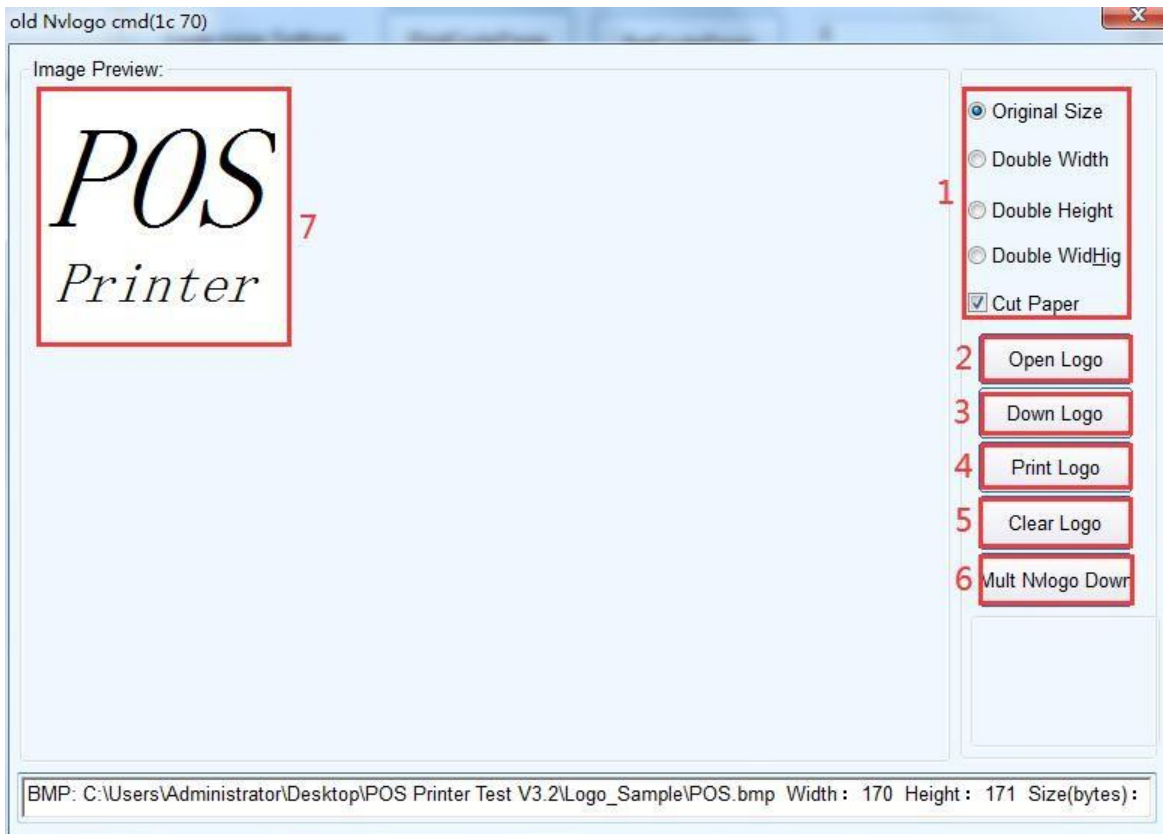
It's for changing the default printer code page. Following is part of the code pages of the 80 series machine,

Code Page:	
0: PC437(Std.Europe)	1: Katakana
2: PC850(Multilingual)	3: PC860(Portugal)
4: PC863(Canadian)	5: PC865(Nordic)
6: (West Europe)	7: (Greek)
8: (Hebrew)	9: (East Europe)
10: (Iran)	16: (WPC1252)
17: PC866(Cyrillic#2)	18: PC852(Latin2)
19: (PC858)	20: (IranII)
21: (Latvian)	22: (Arabic)
23: (PT1511251)	24: (PC747)
25: (WPC1257)	27: (Vietnam)
28: (PC864)	29: (PC1001)
30: (Uigur)	31: (Hebrew)
32: WPC1255(Israel)	255: (Thai)

Input the desired parameter value in “Set code page”, and then complete the setting by clicking "set code page" button. Click "print code page" button to view the setup code.

3. NV logo demo:

Click the "NV download "button, the menu below will pop-up:



3.1 Size requirement and function selection of paper cutting of NV LOGO printing.

3.2 Open LOGO:

Click and select BMP format picture or the LOGO file that you want to print.

3.3 Download NV LOGO:

Click the download button after opening the BMP format file and the file will be downloaded to the printer. Print the file content by clicking " print LOGO" button.

3.4 Print LOGO:

Click this button to complete the LOGO image printing.

3.5 Clear LOGO:

Remove the downloaded NV LOGO.

3.6 Mult NV LOGO down.

3.7 Show current NV LOGO

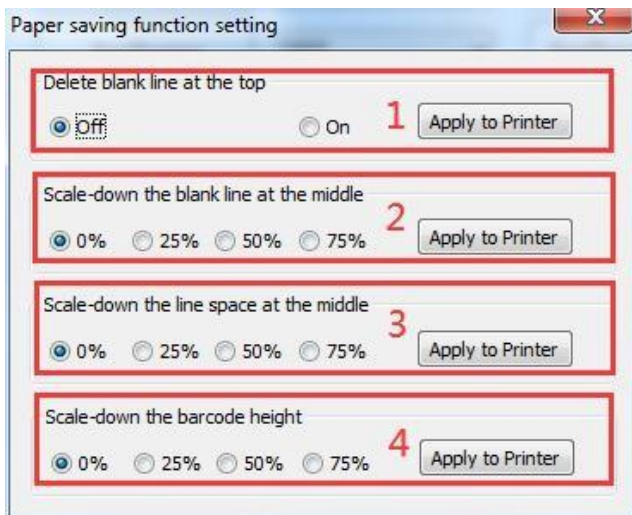
4. Barcode printing test:

Choose a variety of barcode types and height to test the print with a total of nine kinds of one-dimensional code choice.

5. P76 Buzzer Settings:

5.1 It's a setting for turning on or off the beeper for part of the 76 series machines.

5.2 Paper saving function configuration:



5.2.1 Remove the blank at the top of the ticket

Blank description at the top of the ticket: it means that there are 0A (line feed) and 20 (full line on the top) of the ticket

After the function is enabled, the top 0A line feed and 20 space lines will be removed

5.2.2 The blank line in the middle of the ticket is compressed

Explanation of the blank line in the middle of the ticket: it means that there are 0A (line feed), 20 (a line full of spaces) in the middle and bottom of the ticket,

0%: Disable the middle blank line compression function.

25%, 50%, 75%: Turn on the middle blank line compression function, and compress it according to the selected percentage.

5.2.3 Compression of line spacing of ticket layout

Note line spacing description: refers to the default line spacing (1B 33) and the set line spacing (1B 32 n)

0%: Turn off line spacing compression.

25%, 50%, 75%: Turn on the line spacing compression function, and compress it according to the selected percentage.

5.2.4 The ticket barcode is highly compressed

0%: Disable the barcode high compression function.

25%, 50%, 75%: Turn on the barcode high compression function, and compress it according to the selected percentage.

6. P76 Printing density Settings:

To adjust the printing effect of 76 series machine, there are modes: LIGHT、NORMAL、 DARK.

7. P80 Black mark sensitivity Settings:

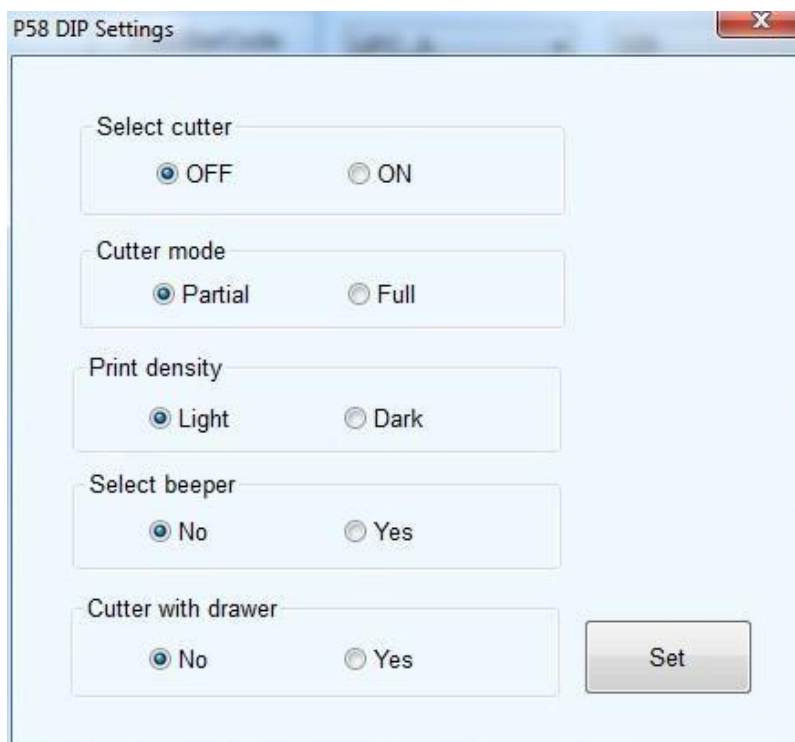
The adjustment of black mark sensitivity Settings for 80 series machines according to different black mark paper. Valid only when black mark function set is on.

8. Serial port baud rate Settings: (only for 58 series and P76E machines)

To set different baud rate (such as: 9600, 19200, 38400, etc.)

9. DIP switches Settings:

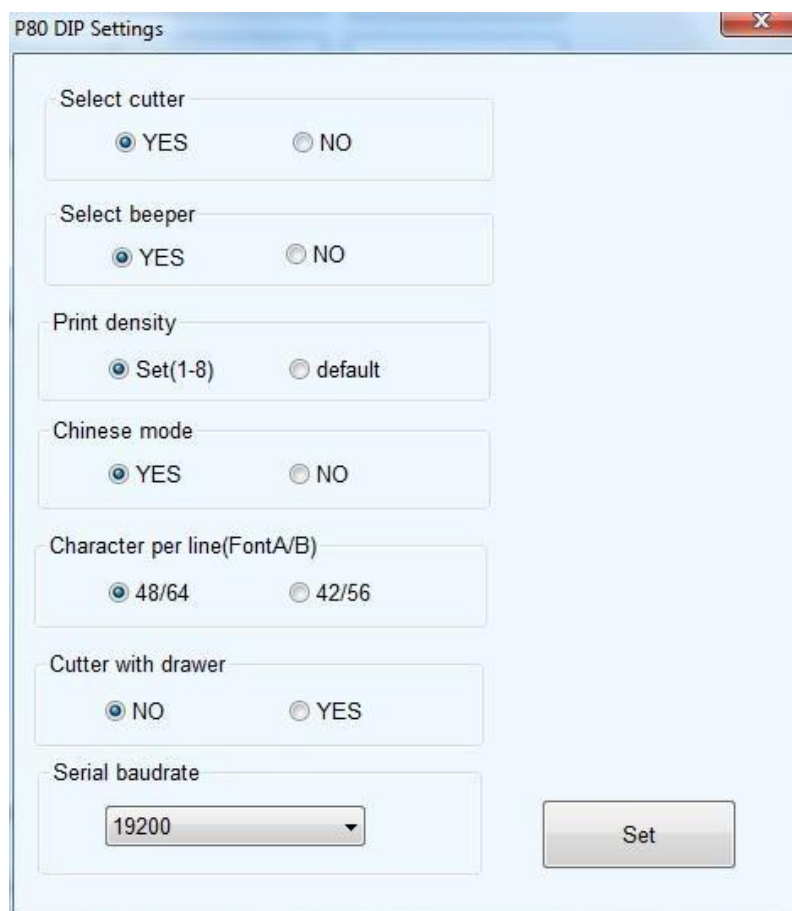
Threemodes:58series,80series(onlyformachineswithoutdialswitches)



The screenshot shows the 'P58 DIP Settings' dialog box. It contains five groups of radio button settings. The first group, 'Select cutter', has 'OFF' selected. The second, 'Cutter mode', has 'Partial' selected. The third, 'Print density', has 'Light' selected. The fourth, 'Select beeper', has 'No' selected. The fifth, 'Cutter with drawer', has 'No' selected. A 'Set' button is located at the bottom right of the dialog.

Setting	Selected Option
Select cutter	OFF
Cutter mode	Partial
Print density	Light
Select beeper	No
Cutter with drawer	No

(58series)



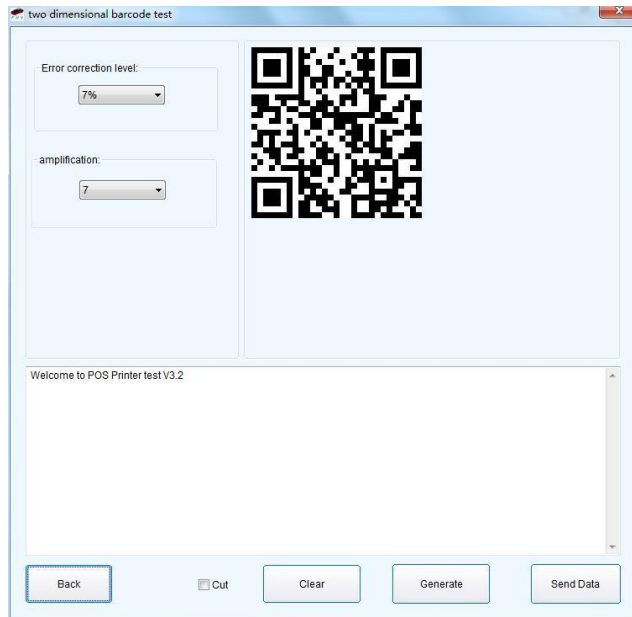
The screenshot shows the 'P80 DIP Settings' dialog box. It contains seven groups of settings. The first two, 'Select cutter' and 'Select beeper', both have 'YES' selected. The third, 'Print density', has 'Set(1-8)' selected. The fourth, 'Chinese mode', has 'YES' selected. The fifth, 'Character per line(FontA/B)', has '48/64' selected. The sixth, 'Cutter with drawer', has 'NO' selected. The seventh, 'Serial baudrate', is a dropdown menu with '19200' selected. A 'Set' button is located at the bottom right of the dialog.

Setting	Selected Option
Select cutter	YES
Select beeper	YES
Print density	Set(1-8)
Chinese mode	YES
Character per line(FontA/B)	48/64
Cutter with drawer	NO
Serial baudrate	19200

(80series)

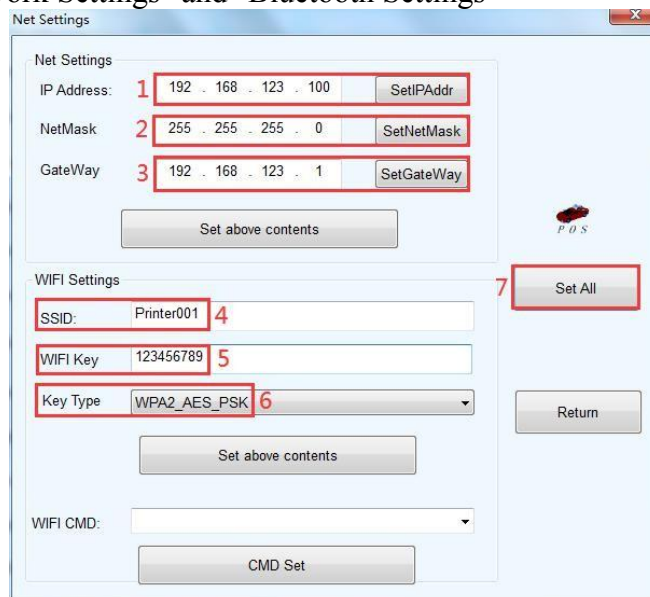
10. “2D barcode testing”:

Edit and print test of two-dimension codes



11. "Network Settings"

It includes "Network Settings" and "Bluetooth Settings"



(Network Settings)

“1” Set up the Printer’s IP address.

“2” Set up the Subnet Mask.

“3” Set up the Gateway.

“4” WIFI SSID address settings. Note: the SSID address is the name of your Wireless Router’s name.

For example, if the address of the current Router (SSID) is: *Pinter001*, then this SSID address should be typed in the tab of “SSID”.

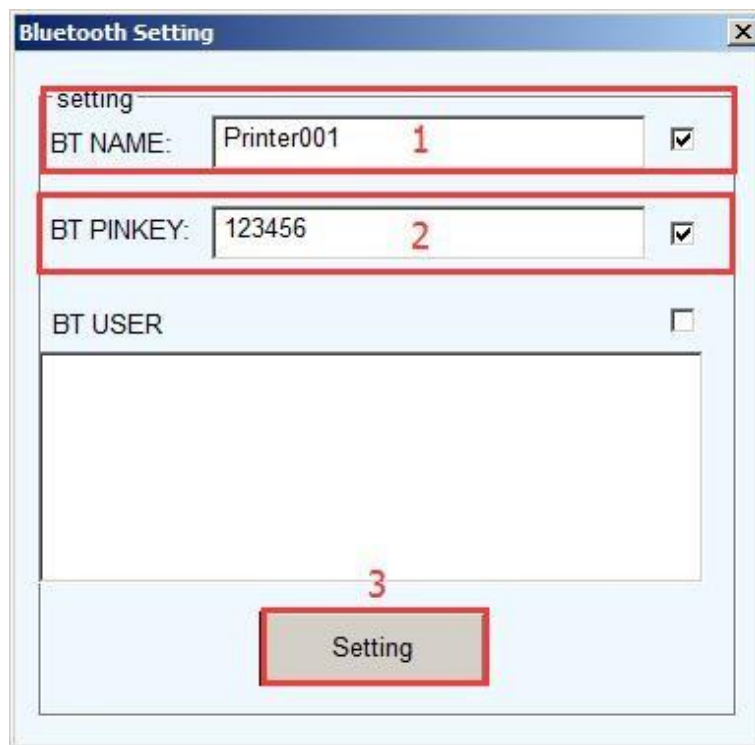
“5” WIFI password settings. Note: the password of the Wireless Router

For example, if the WIFI’s current password is: *123456789*, then this password should be typed in the tab of “WIFI password”.

“6” Encryption type of WIFI SSID settings. Note: the encryption type of the Wireless Router.

For example, if the encryption type of the Router (SSID) is: *WPA_TKIP_AES_PSK*, then this information should be selected in the tab of “SSID Encryption type”.

“7” After filling the above information, click the “Setting All” option. The printer will “BEEP”. Next, restart the printer.



(Bluetooth Settings)

“1” Set up the Port name of the Bluetooth Printer (the Factory Default BT NAME is “Printer001”)

“2” Set up the Password of the Bluetooth Printer (the Factory Default BT PINKEY is “123456”)

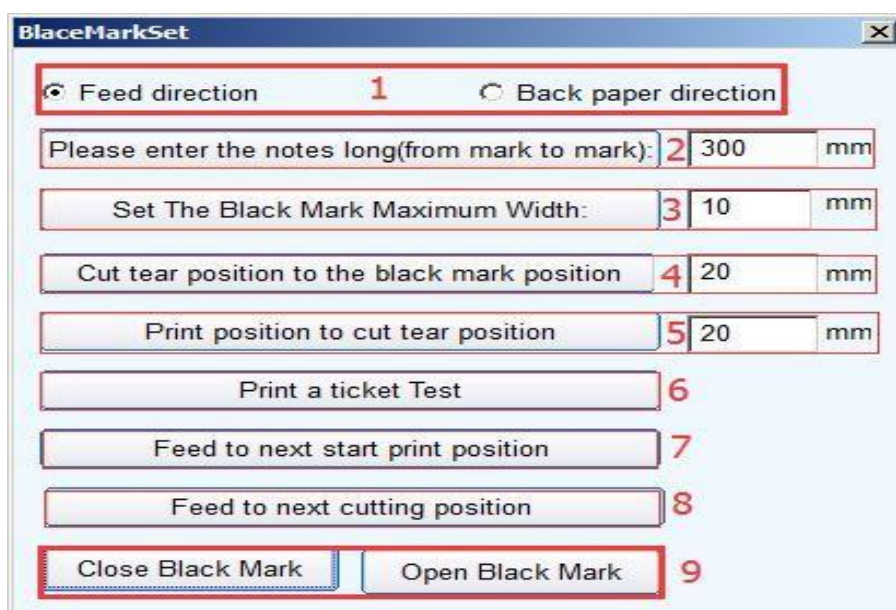
“3” After finishing the above settings, click “Setting”, and then finished the settings of Bluetooth printer Parameters.

12. “USB Mode Setting”

Mode Setting of printer’s USB port includes Usb Printing and Virtual Com. USB mode switches according to customer demand. For specific operation, refer to file “instructions of switching between USB port and virtual Com ”in the folder “IP address change and other functional specification”

13. “Black mark Settings”

To set special paper printing with black mark.



13.1 Offset in paper-feed direction, offset in paper unwinding direction

To set the direction of data calculation for paper cutting position, the default value is feed direction.

13.2 "Please enter the black mark spacing (mark length)" To calculate the center distance of two black marks.

13.3 "Set the black mark Maximum width"

It's a value to calculate the actual height of a black mark.

13.4 "the offset of paper cutting position relative to the black mark position"

It's to calculate the actual distance from the paper detector in the print head to the paper cutter.

13.5 "Distance between the print starting position and paper cutting position"

It's to calculate the distance from the print starting position to paper cutting position.

13.6 "Print a ticket test"

Click this button and a note will be printed out. If it's properly set, paper will automatically go a length of black mark and then be cut.

13.7 "feed to next print position"

Click this button and paper will go to the next print starting position for a black marker. Print out the information to test the right position.

13.8 "feed to the next cutting position"

Click this button and paper will go to the next paper cutting position and paper will be cut to test the accuracy of paper cutting position.

13.9 Turn on the black mark, turn off the black mark

Black mark function is off by default. Turn on black mark function to make related Settings. In case black mark position is detected incorrect, please reset referring to 7 "P80 black mark sensitivity" of "advanced".

14. "Send file data"

Click button, choose and open TXT format file in the pop-up dialog box, and then the printer will print the contents of the file.

15. "Cut With Beep"

The alarm function can be set to turn on or off after cutting paper with cutter.

16. "Input BOX Code Page"

Words responsible for decoding text boxes.